



UPSTREAM
KELOWNA



Central Okanagan
Public Schools
Together We Learn

**A PREVENTATIVE APPROACH TO SCHOOL
DISENGAGEMENT AIMED AT HELPING STUDENTS
REDUCE BARRIERS TO RESILIENCY, BOTH AT
SCHOOL AND AT HOME.**

DEAR PARENTS/GUARDIANS AND STUDENTS,

**On November 25, 2025 Grade 8
students at École KLO Middle School
will have an opportunity to participate
in the Upstream Student Needs
Assessment.**

**It is a confidential questionnaire that
will take about 20 minutes to
complete and will be administered
during school hours.**

This assessment will be offered to all
Grade 8 students, please note it is not
mandatory for them to complete.

WHAT IS UPSTREAM KELOWNA?

- A locally adapted model of “Upstream Canada”, a research initiative aimed at ending youth homelessness across Canada through early intervention practices
- A cross-sector, collaborative, youth driven approach to wrap-around services
- An innovative, evidence-based method
- Uncovers hidden needs or barriers to resilience
- Increases opportunities to access a wide range of services to promote health and well-being in students and families

For Questions or Information, contact

Ty Nelson

Vice Principal

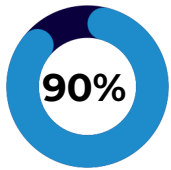
ty.nelson@sd23.bc.ca

Funded in part by,

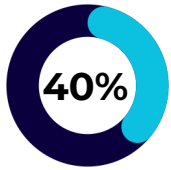


KGH FOUNDATION
Kiwanis Legacy Fund

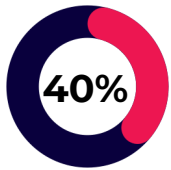
CONNECTION TO SERVICES



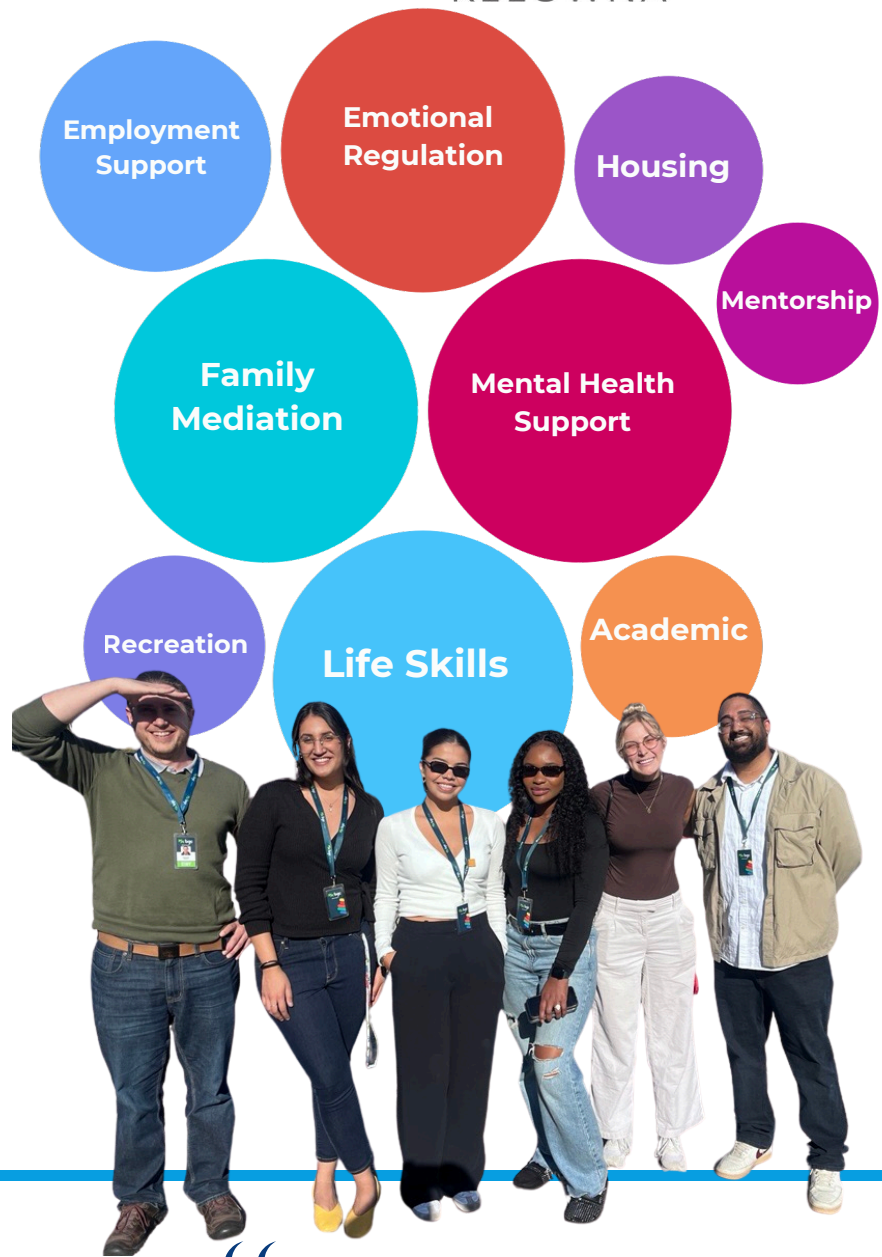
Gr. 8 students participate



of students are identified
(100% offered a check in)



of those identified get
connected to Upstream
support



“

This couldn't have come at a better time, we didn't know where to look for help and Upstream came to us.

Parent of an Upstream Participant



**MAKING
THE SHIFT**
youth homelessness
demonstration lab

“

Upstream has connected me to a person that connects to me and engages in who I am as a person and makes me feel safe and secure when talking to them.

Upstream Participant

Making the Shift Is a project of The Canadian Observatory on Homelessness and A Way Home Canada